

Connecting to the IVC Intranet web site <http://intranet.ivc.edu>

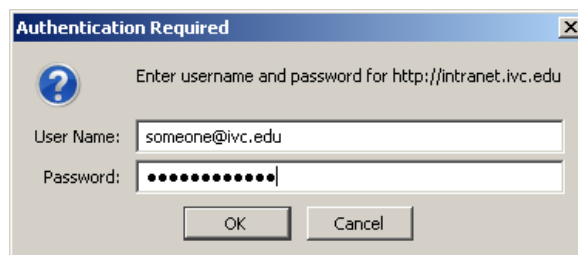
The IVC Intranet (<http://intranet.ivc.edu>) is password protected. If you are using an on-campus Windows computer and Internet Explorer, you will be logged in automatically (see Windows / IE instructions at the end of this document for more information). All other computer, browser, locations will be prompted for a username and password.

If you are prompted for a username and password:

If you are prompted for a username and password, enter the same login and password that you use to access your faculty / staff email account on the web.



If you are using FireFox, Safari, Camino, or any other browser, the login prompt will look a little different. The User Name and Password that you need to use, however will be the same.

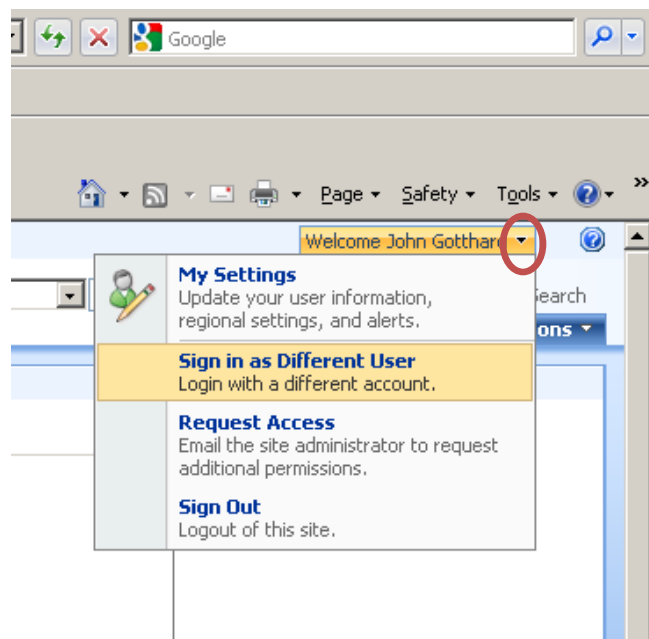


Automatic login for Windows computers on campus using Internet Explorer

If you are using Windows computer on an on-campus computer (i.e., a computer connected to the IVC local area network), you will be automatically logged in using whatever account you are logged in as on your local computer. For instance, if you log in to the local computer as ivcstaff\jsmith or jsmith@ivc.edu then you will be logged in to the intranet using that same account.

Important: if you are logged in to the computer using a “generic login” such as faculty1 or the teacher station login account, you may not be able to see or do the things you can do using your personal account.

How to tell which account you are logged in as



In the upper right corner of the web page, you will see “Welcome ...” and the name of the account you are logged in as (see picture above). If you want to log in as a different account, click the little down arrow (red circle) and click **Sign in as a Different User**. You will be prompted for a user name and password (see previous section for instructions).