

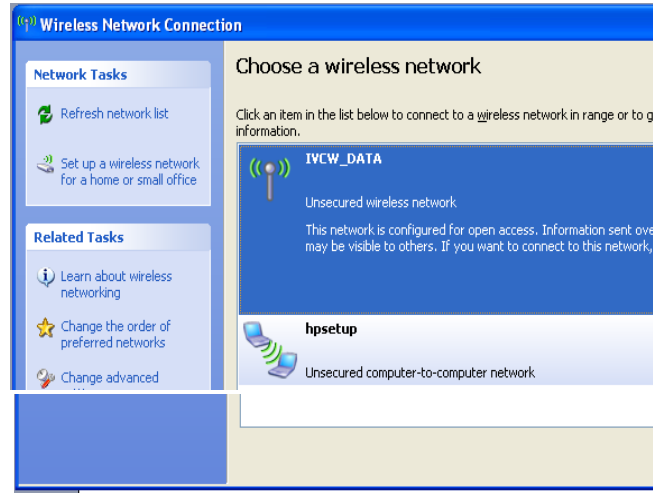
1. If your laptop did not automatically detect and connect to the wireless network, the following message may indicate no connection. Note that the network icon also may have a yellow exclamation point or red "x" to indicate no connectivity:



Double-click the wireless network icon on the Task Bar -



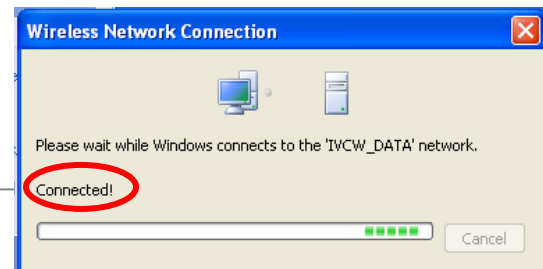
The Wireless Network Connection window will be displayed. Select **IVCW_DATA** and click on the "Connect" button:



2. The system will display the following window indicating the network connection in process:



3. When the system successfully connects you to the network, this window will be displayed. You may then close it and proceed to login. See *Accessing the Wireless Network at Irvine Valley College*.



Note: If you are still unable to successfully connect to the network, move to another area of the building or campus -- it is possible you are currently in an area with weak signal strength.